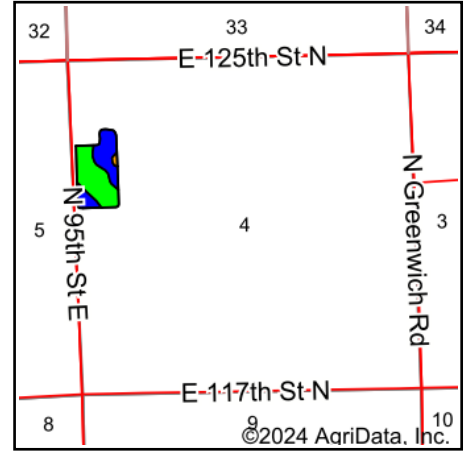
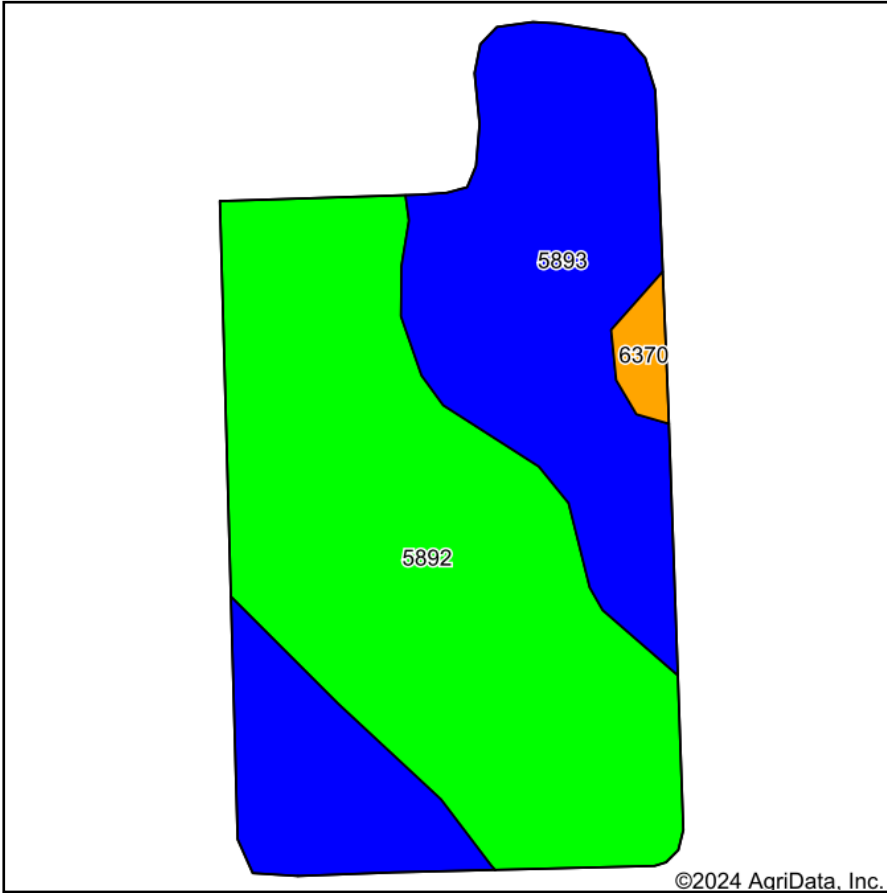


# Soils Map



State: **Kansas**  
 County: **Sedgwick**  
 Location: **4-25S-2E**  
 Township: **Lincoln**  
 Acres: **15.61**  
 Date: **9/23/2024**



Soils data provided by USDA and NRCS.

Area Symbol: KS173, Soil Area Version: 19

Code	Soil Description	Acres	Percent of field	Non-Irr Class Legend	Non-Irr Class *c	Irr Class *c	Range Production (lbs/acre/yr)	Corn Irrigated Bu	Grain sorghum Bu	Grain sorghum Irrigated Bu	Smooth bromegrass AUM	Smooth bromegrass Irrigated AUM	Winter wheat Bu	*n NCCPI Overall	*n NCCPI Corn
5892	Farnum loam, 0 to 1 percent slopes	8.61	55.2%		Iw	Iw	3695							68	60
5893	Farnum loam, 1 to 3 percent slopes	6.73	43.1%		IIc	Is	3458							63	50
6370	Milan loam, 3 to 6 percent slopes	0.27	1.7%		IIIe		4020	149	52	109	5	10	32	65	60
<b>Weighted Average</b>					<b>1.47</b>	<b>*-</b>	<b>3598.4</b>	<b>2.6</b>	<b>0.9</b>	<b>1.9</b>	<b>0.1</b>	<b>0.2</b>	<b>0.6</b>	<b>*n 65.8</b>	<b>*n 56.0</b>

\*n: The aggregation method is "Weighted Average using all components"

\*c: Using Capabilities Class Dominant Condition Aggregation Method

\*- Irr Class weighted average cannot be calculated on the current soils data due to missing data.