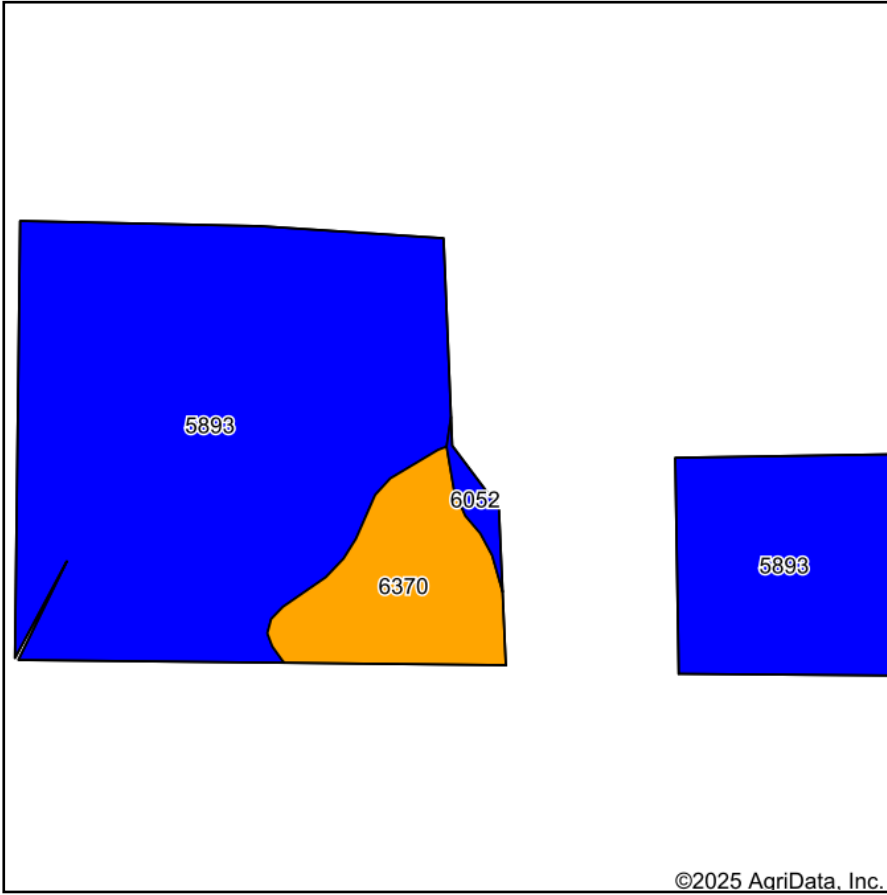
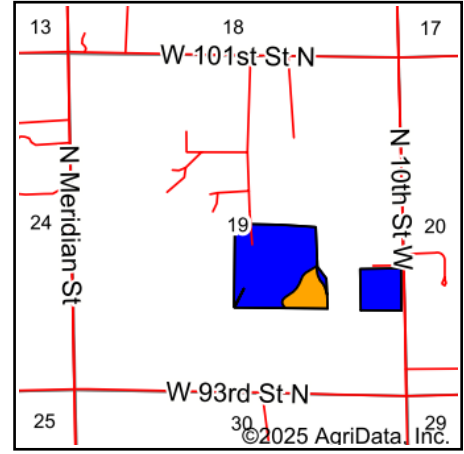


Soils Map



Soils data provided by USDA and NRCS.



State: **Kansas**
 County: **Sedgwick**
 Location: **19-25S-1E**
 Township: **Grant**
 Acres: **50.04**
 Date: **2/15/2025**



Area Symbol: KS173, Soil Area Version: 20

Code	Soil Description	Acres	Percent of field	Non-Irr Class Legend	Non-Irr Class *c	Irr Class *c	Range Production (lbs/acre/yr)	Alfalfa hay Irrigated Tons	Corn Bu	Corn Irrigated Bu	Grain sorghum Bu	Grain sorghum Irrigated Bu	Smooth bromegrass AUM	Smooth bromegrass Irrigated AUM	Soybean Bu
5893	Farnum loam, 1 to 3 percent slopes	43.03	86.0%		Ilc	Is	3458								
6370	Milan loam, 3 to 6 percent slopes	6.45	12.9%		Ille	Ille	3939	6	51	128	43	94	5	8	
6052	Elandco silt loam, occasionally flooded	0.56	1.1%		Ilw	Ilw	4825								
Weighted Average					2.13	1.27	3535.3	0.8	6.6	16.5	5.5	12.1	0.6	1	

*n: The aggregation method is "Weighted Average using all components"

*c: Using Capabilities Class Dominant Condition Aggregation Method

Soils data provided by USDA and NRCS.