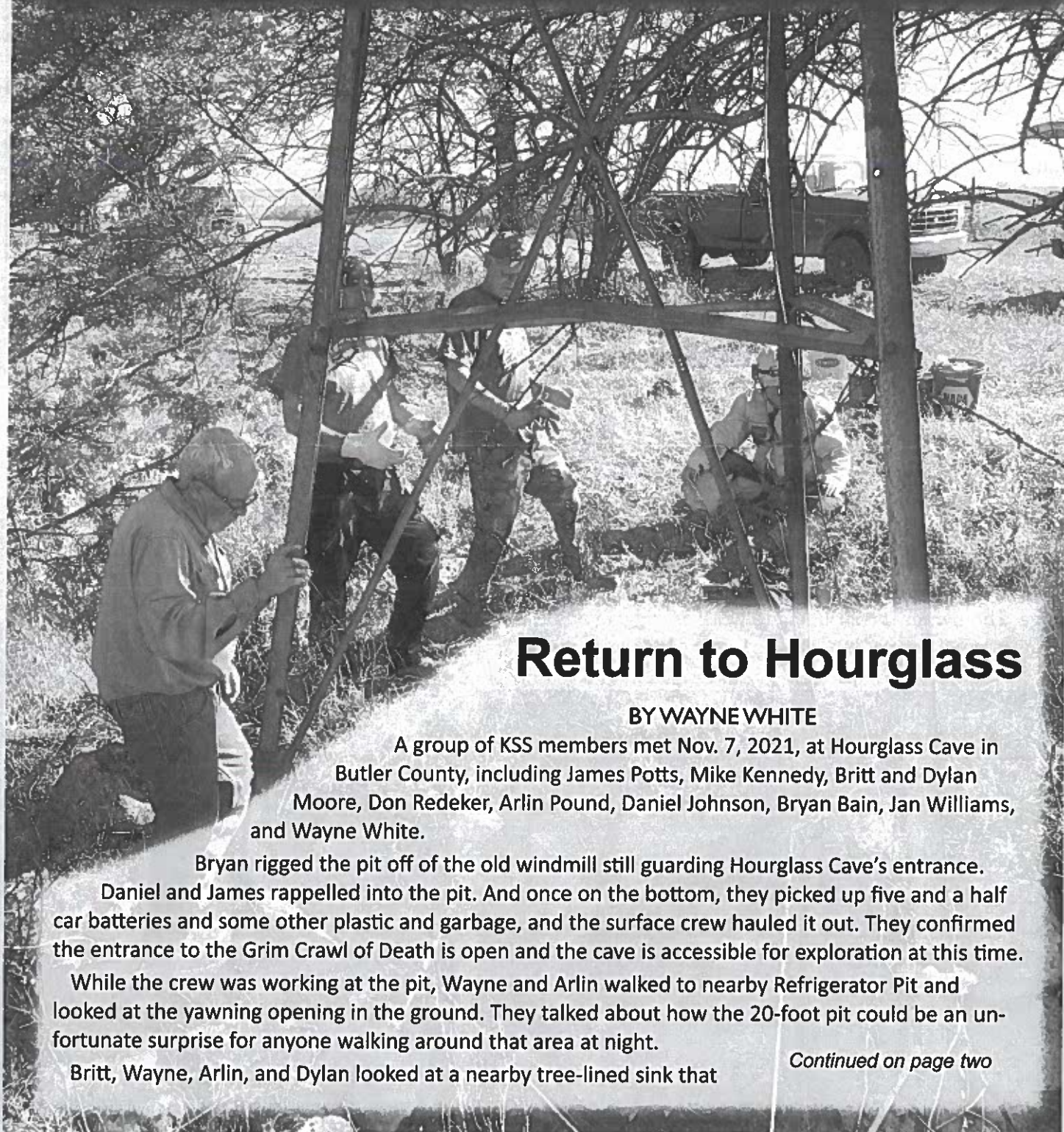


The Kansas Speleological Society

KANSAS KAVER

VOLUME 38 • NO. 4

DECEMBER 2021



Return to Hourglass

BY WAYNE WHITE

A group of KSS members met Nov. 7, 2021, at Hourglass Cave in Butler County, including James Potts, Mike Kennedy, Britt and Dylan Moore, Don Redeker, Arlin Pound, Daniel Johnson, Bryan Bain, Jan Williams, and Wayne White.

Bryan rigged the pit off of the old windmill still guarding Hourglass Cave's entrance.

Daniel and James rappelled into the pit. And once on the bottom, they picked up five and a half car batteries and some other plastic and garbage, and the surface crew hauled it out. They confirmed the entrance to the Grim Crawl of Death is open and the cave is accessible for exploration at this time.

While the crew was working at the pit, Wayne and Arlin walked to nearby Refrigerator Pit and looked at the yawning opening in the ground. They talked about how the 20-foot pit could be an unfortunate surprise for anyone walking around that area at night.

Britt, Wayne, Arlin, and Dylan looked at a nearby tree-lined sink that

Continued on page two

RETURN TO HOURGLASS

Continued from page one

had a promising hole in the middle of the trees. Britt had poked around with a shovel and posthole digger, but it appears it will require a major effort to dig it open.

The roving crew then looked at Arrowhead Cave, which had recently been dug open and found to have going passage - a new Kansas cave! They looked at the several tight openings in the entrance area and surmised about which way the passage would go if the cave did go. See update below.

After gathering rigging and garbage from Hourglass, the crew all headed to Spaulding's Windmill Cave, where Bryan rigged the rope to the bumper of his vehicle. Daniel and Bryan rappelled into the well, and after poking around for a while, they determined it sumped upstream and downstream. Future plans would be to wait for a drought and see if it was passable. If we ever find a downstream exit for the system, Spaulding's would be a good place to drop some dye.

ARROWHEAD CAVE UPDATE

The following weekend, Daniel returned to Arrowhead Cave, and after negotiating an upper level crawlway at the entrance area, he found a pit leading down. After a climb down with a cable ladder, a crawlway was found at the bottom, leading off into darkness, and where he took a photo. Daniel later returned with a support crew and crawled several hundred feet before the passage became uncomfortably low but still possibly passable, or such as it appeared in a video of the trek that Daniel had posted on his Facebook page. The owner is continuing to work on digging on other leads and will let the KSS know of any new developments.



Above, Britt and Dylan work on digging open a tree lined sink near Arrowhead Cave, below. Lower left, Daniel Johnson took a snapshot of likely the first human view of a water passage in Arrowhead Cave. Other photos by Wayne White.



UNDERGROUND IN BUTLER COUNTY



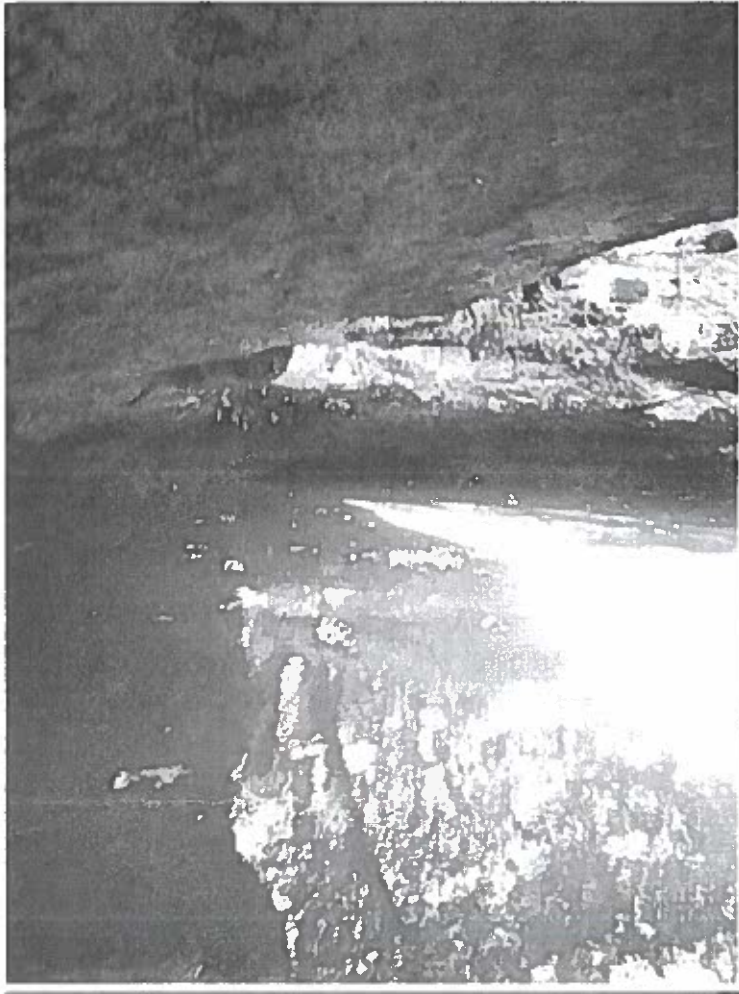
Kavers check out Spaulding's Windmill Cave, in Butler County, Kan. Left, Bryan Bain exits on rope rigged to the bumper of his Chevy. Above, Daniel Johnson gets ready to rappel; the old well is about 38 feet deep. Below, Bryan checks the rigging as James Potts gets on rope to descend into nearby Hourglass Cave.

Photos by Wayne White and Jan Willisams.



Exploring Woodson County

CAVES, CASTLES OR CELLARS?



Dirty water in Cave Falls Cave's shaded entrance pool reflects its rock overhang.

Below, Arlin Pound relaxes in the serenity of the small Woodson County shelter cave he and James Potts found while perusing the gazeteer.

Photos by James Potts

**BY JAMES POTTS
NSS 30832**

The fall Kansas Speleological Society meeting was held the first weekend in October at Woodson County Fishing lake. It was a nice crisp fall day as we gathered at the shelter house. Nobody had any leads, but while I was looking for restaurants I saw there was a place on my map app called Kalida Castle Cave. With nothing else going on the following jumped in to their vehicles: Walt and Adelle Racker, Guy and Kay Elis, Arlin Pound, and James Potts. We drove down dirt roads to the cave site. Once there we saw a gated drive; there were lots of no trespassing signs. The country was flat and didn't look cavey at all. As it turns out there was no

Continued on page five



CAVE FALLS CAVES

WOODSON COUNTY KANSAS

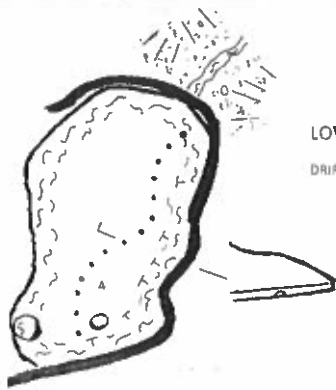
SURVEYED

November 27 2021

By James Potts NSS30#32

Judy Henderson

For the Kansas Speleological Society

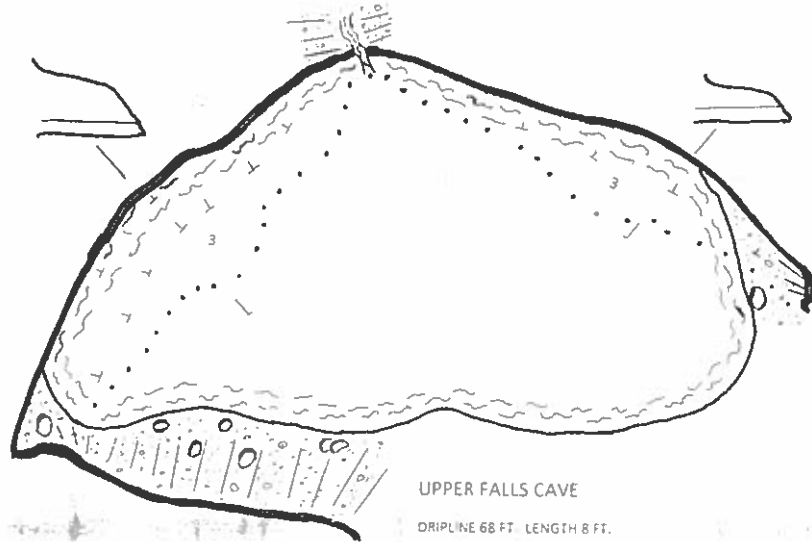
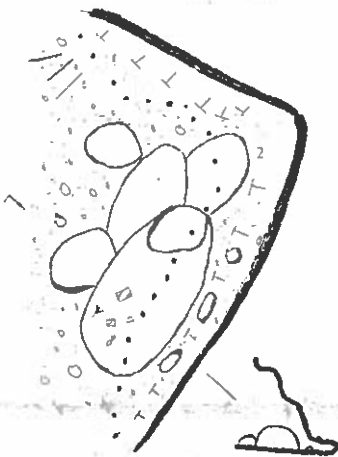


LOWER FALLS CAVE

DRIPLINE 20 FT. LENGTH 5 FT.

MAGIC CAVE

DRIPLINE 31 FT. LENGTH 5 FEET



UPPER FALLS CAVE

DRIPLINE 68 FT. LENGTH 8 FT.

SCALE IN FEET

Caves, Castles, Cellars

Continued from page four

cave at the site. Just a fancy cellar made to look like a castle.

We were few miles from Yate Center so we headed over there to look at a fall festival going on at the town square. After walking around and seeing the wares, we stopped in front of a Mexican restaurant; we lost Guy and Kay on the way to town, but after a cell call we hooked up again this spot. I was hungry for a burrito. Arlin and I went in while the rest headed back to camp. It took an hour to get service and get our food. Arlin said no tip. The food was just OK.

After lunch we drove over to Woodson County Lake, to see something on the map called Cave Falls Cave. It was just off the road and was easy to find. The cave was a large overhang, where in wet weather a small

waterfall flows over the lip of the shelter. The cave is a horseshoe shaped alcove 30 feet around going back 10 feet with a ceiling height of four feet. There is a large pool of dirty water filling most of the cave. Arlin headed back to the truck, while I checked the rest of the hollow out.

I did find two more small shelters. The last one had a rock out in front with strange symbols carved in to the sandstone. Whether they were Indian pictographs or modern graffiti I don't know, they may have been left there by aliens. It reminded me that one of the caves we planned to search out was Prehistoric Cave, another cave with pictographs. I climbed out of the wooded hollow and hiked back to the truck, where Arlin was picking stick-tights off his pants.

We drove back to camp and hung around under a shade tree while Wayne White caught one fish after another.

KSS AT THE FALL MVOR OCT. 22-23, 2021

ROCKING THE MVOR

BY JAMES POTTS
NSS 30832

The weekend of Oct. 23, 2021, the fall MVOR convention was held near Noel, Missouri. On Friday, Oct. 22, I took a day of vacation and headed south. I followed Judy to Galena, Kan., where she turned toward Joplin, where she was going to hang with her cousin, Melissa.

I went on the Schemerhorn Park to visit Schemerhorn Park Cave. After gearing up, I headed up the trail to the cave. Not paying attention to where I was going I walked into an overhang branch and knocked my glass off. Oh no! I can't see without my glasses. I was crawling on the trail looking for them when a young couple showed up and I told them what happened. The young lady found my glasses and with "I can see, I can see" I thanked for finding them.

I got to the cave and climbed the hill to the sink entrance, rigged my rope and went to the main entrance. I clipped into the rope, and yo-yoed up and down the rope. On my fourth rappel, I saw another caver entering the cave. He said the he was on his way to the MVOR and stopped by to see a Kansas cave. He was from Illinois and belonged to the Little Egypt Grotto.

I picked up my gear and headed for the next cave. I drove over to Newton County, Missouri, to Wild Cat Glade Conservation area and visited Red Rock Cave. The cave got its name from the color of the rock it was formed in, but now with fire soot, and spray paint graffiti, and many names, it should be called Calico Cave. Just beyond Mother Nature's Crack was a group of rock climbers. I talked to them for a little while. They said that they have been trying to remove graffiti, but it was a futile enterprise as it keeps coming back.

I went on to the cave and crawled to the back, counting all the pieces of trash in the cave. On the way back to the truck I lost my very expensive Petzl Pica 3 caving light. The plastic clip broke when the helmet hit the rocks on my climb up Mother Nature's Crack and it fell off - oh no! I went back later to find it, but no luck.

I drove down the Shady Breach Campground and made camp. I found Guy and Kay Ellis and Jan Morton, so I hung around with them. At 6 p.m. the Howdy party started. I ate a bowl of chili and drank a margarita, soon I seeing all my old caving companions. Most were old and didn't cave anymore. Randy Rosenbourg ran into me so I ran with him after saying the magic words, "Let's party!"

Ellises join up for underground camaraderie at fall MVOR

BY GUY AND KAY ELLIS

Kay and Guy Ellis attended the MVOR, Oct. 22 and 23, 2021, at Shady Beach Campground near Noel, Missouri. They met up with James Potts, of the KSS. There were 149 cavers in attendance. As usual there was a big bonfire, food, libations and music in the campground.

The three of us teamed up with Jan Morton, a regular attendee of the MVOR, and explored four caves on Saturday, Oct. 23. The caves we explored were Harmon, Secret Garden, Freedom Gate and Flute Stone Caves. All four caves were within a 10-mile radius of the campground. They were short dry caves but fun to explore. Flute Stone Cave was the one we liked the most.

We also visited a cave bar in Lanagan, Missouri, that was a unique venue. We all had an enjoyable time.

After attending the MVOR on Sunday, Guy and Kay headed down to Beaver Lake in Arkansas, to look for caves along the eastern lake shore with a friend who had a boat. We did not find any caves, but the area looked really good to go back another time and do some more cave hunting.

I soon found myself talking to a 19-year-old girl from South Africa. I asked her what part of South Africa she was from and she told me it was a place called Bloemfontein, I ask where it was and she said the middle part, then she told me to look it up. A older lady named Virginia showed up and we started talking; she ran out of beer so we went to her camp and sat on the picnic table. She drank another beer, and I had another tequila. We soon went back to the howdy party were I found myself drawn to another crowd.

One of the last things I kind of remember was waking up Guy and Kay to find out where we going caving the next day. The next day I signed us up for the day trips. I found out that one of the trips listed was Henson Cave, a nice long

Continued on page seven

KSS AT THE FALL MVOR OCT. 22-23, 2021

Continued from page six cave near Jane. Guy, Kay and I had seen it before, so that one we did not do. They did use my map of the cave in the guide book, which I was pleased to see.

Those in our group were Guy, Kay and Jan. The first one was Harmon Cave; this cave has special meaning to me as it was one of my first cave trips back in the '90s. I discovered at this time my lost helmet light and tried to use my old worn out side lights. The batteries were used up and I had very little light to see by.

The entrance sat high on a bluff and it was a tricky climb to get in. Once up we found a walking passage going into the dark. Not having light I stepped into a hole in the floor and fell on my butt. We came to a junction where we stared at a belly crawl to get further into the cave, here we turned around and backed out.

Once outside we ran over to the other entrance and entered the largest room in the cave. We met another bunch leaving the cave; they were young and had done a through trip. The next cave we saw was Hidden Garden Cave. This cave was new to me. It sits in a guy's front yard and I had never asked to see it. The cave starts by descending some stairs in to a large room, the ceiling is standing height and at the back was a crawlway. Jan pushed this crawl as I tried working on my light problem. Soon we left this cave and walked down the road to the next cave. Freedom Gate Cave sat up on the bluff, but unlike Harmon Cave it was easier to get to. The entrance was walking with a cave gate. It was supposed to be unlocked but it wasn't. Kay and Guy slipped through a open space between gate and the wall. Jan could not make it so she found a good rock and hammered at the space to enlarge it; soon she stepped into the cave. I was too big.

But I had been at this cave before. Way back when, I visited the cave - the gate was open then. On that trip, I had parked along the road, and on the way back to my truck a red Firebird drove around the corner, the passenger leaned out of the window and shot at me with a pistol. Nerved, I raced to Anderson, where I found a sheriff deputy and told him what happened. He took me the Pineville office. The

sheriff walked in. He asked me one question, "Do you drive a black truck?" At that time I had my black GMC Jimmy. He brought in two kids who were trying to scare away a repo man, who was after the red Firebird.

But nothing bad happened today. The cave was all walking with two large rooms. Jan had never seen Flutestone Cave, so I led the group over there. We drove south and parked in a field across from the cave. Like a lot of caves in the area, this one was also on a bluff. The trail was easy to find and we found our selves at the entrance. I discovered that this cave was now gated, but it was open and we slipped though into the darkness. Jan lent me one of her lights, as I still did not have a working one. The cave was all walking the high canyons and fluting on the walls. The cave had many formations, but many were broken. We passed another group leaving and soon we were at the back of the cave. When we exited, there the gate keeper - angry because we stayed in the cave too long, he wanted it locked up at 1:30 p.m. Plus - we didn't sign up for a guided trip.

Jan went back to camp and the rest of us went to a park in Noel to eat lunch. Around 5 p.m., Guy and Kay and I decided to drive over the mountain to Langan to go to the Cave Bar, an old show cave formerly known as Truitt's Cave. At the last minute, Randy decided it was a good idea and we jumped into Guy's truck and headed down the road. At the bar, Guy's bourbon and soda had bugs floating in it, so he got another with the same results. The bourbon bottle had been left open and bugs had gotten in it. He finally got a clean drink and we sat out at the cave entrance.

Back at the camp the banquet featured Mexican food - I got three tacos - two bison meat and one elk meat. After the vodka, I had drank beer that night. After dinner and business meeting, we head to the bonfire, where I drank more beer and caught up with old caving friends. Later I found myself at Ozark Highland Grotto camp; everyone remembered me and I felt welcomed. I told them my Kansas caving buddies are all getting geriatric and I found the same thing with OHG members. Charlie Ray told me, "Wait, and this old man will get up and come kick your ass." I laughed and was soon tired from all of the days' events, and went to bed. With choruses of "bullshit" yelled into the night, and everyone camped on top of one another, it was a true MVOR. One of the better ones.

Way back when, I visited this cave ... on the way back to my truck, a red Firebird drove around the corner, the passenger leaned out of the window, and shot at me with a pistol.



White Banks Cave's entrance appears smaller nowadays than in historical photos. Guy Ellis photo.

Ellises relocate White Banks Cave in Brown County

BY GUY AND KAY ELLIS

On Oct. 19, 2021, Kay and Guy Ellis were able to find White Banks Cave, Brown County, Kan. White Banks cave was a cave used by John Brown to hide slaves in 1859. It is reported that John Brown hid 24 slaves in the cave and kept their ponies and horses in the creek below the cave, thus the name of the reservoir in the cave area, Pony Creek Lake.

Oct. 19 was a cool and windy day with temperatures in the upper 60s and the wind blowing more than 35 mph, so navigating the lake was somewhat tricky. We were quite cautious to not get wet and cold and unable to navigate the water. We had searched for the cave in the spring of this year without success, so it was good to find it this time.

The entrance is approximately six feet across and 1.5 feet high. We did not enter the cave because we were not dressed for caving as we were dressed for boating. When we shined our lights into the cave, we could see at least 50 feet and beyond of crawling cave passage. Old pictures of the cave showed the entrance to be much larger than it is today.



*Kay visits the entrance to White Banks Cave.
Guy Ellis photo.*

KSS MEETING MINUTES - OCT. 9, 2021 WOODSON COUNTY STATE FISHING LAKE

SUBMITTED BY WALT RACKER, KSS SECRETARY

Attendees: Gaylen Garinger, Wayne White, Jan Williams, Adele and Walt Racker, Bryan Bain, Arlin Pound, James Potts, Guy and Kay Ellis.

Call to Order: The meeting was called to order by Arlin Pound, president, at 7:05 p.m. Oct. 9, 2021, at Woodson County Fishing Lake.

Minutes: Minutes of the previous meeting were approved.

Treasury: Jan reported a current balance of \$1,100.19. Report was approved.

Old business: James has acquired a supply of sheet metal for use in stabilizing the entrance to GT's Cave in Cowley County. This would require the use of T-posts and a driver.

Bryan reported that new openings have been found near Hourglass Cave, in Butler County. The new owner has contacted KSS and is eager to explore it with KSS; this can be done in the first weekend of November.

Vertical practice is needed, perhaps over Halloween weekend.

Wayne received an email message from Garrett Drake in Butler County, who is interested in geodes.

Arlin reported that Gary McCutcheon, an early Kansas caver, died two years ago.

Election: The following officers were elected by unanimous acclamation:

President: James Potts

Vice-President: Arlin Pound

Secretary: Walt Racker

Treasurer: Jan Williams

Librarian: Jan Williams

Newsletter Editor: Wayne White

Safety & Techniques: Bryan Bain

Upcoming meetings: Jan. 29-Gaylen Garinger's home.

Spring meeting: April 30, Schermerhorn Park Cave, Galena, KS; campout at Baxter Springs river park. James has leads on locations for State Line aka Diesel Cave and Belville Cave aka KKK Cave.

Summer meeting to be determined.

Newsletter: Wayne appealed for trip reports from members.

Meeting was adjourned at 7:51 p.m.

NOTE ABOUT PREHISTORIC CAVE, WOODSON COUNTY, KAN.

After the KSS meeting at Woodson County State Fishing Lake, on Oct. 8 and 9, 2021, Kay and Guy Ellis contacted one of the owners of Prehistoric Cave in Woodson County, Kansas, regarding possibly obtaining permission for KSS members to explore the cave. The owner said the property was owned by her and her siblings. She said she would check with them to see if it would be possible for the KSS to visit the cave. It would be a while before she would be able to get with them to see if it would be okay for us to check the cave out. We will contact her in the near future to ascertain her findings. She thought her siblings may be somewhat hesitant. -Guy Ellis

K-68 highway project comes uncomfortably close to Miami County karst features

Wayne received a phone call from a person who reported a new highway project in Miami County might be coming close to significant karst features - sinkholes visible from the highway. Further checking revealed these sinkholes west of Louisburg are within about 3,000 feet of Cave Springs Cave, which has been mapped by KSS members for 629 feet and has an active water course throughout its length.

Should the KSS send a letter to KDOT or other state agencies to warn them of the proximity of the K-68 four-lane project to the cave, its possible connected karst features, and the underground drainage system?

Winter KSS Meeting
Jan. 29, 2022 - Lawrence, Kan.

CANCELED

The winter 2022 KSS meeting scheduled for Jan. 29, 2022, at Garingers' home at Lawrence, has been canceled due to COVID concerns. At this time, the meeting has not been rescheduled. For more information, contact Gaylen at 785-842-5003.

KSS DUES DUE

Annual KSS dues are \$15, usually payable at the first of the year. Send dues to KSS Treasurer Jan Williams, 392 E. 197th St., Scranton, KS 66537.

Spring KSS Meeting
April 29-30, 2022 - Baxter Springs, Kan.

The spring 2022 KSS meeting has been scheduled for April 29-30 at the Riverside Park, west side of the Spring River on the east side of Baxter Springs, on U.S. Highway 166. Business meeting will be 7 p.m. Saturday evening. James Potts is working on possible caving opportunities in Kansas or Missouri. For more information, call James at 620-232-9515.

SEND NEWS TO KANSAS KAVER

The Kansas Kaver is published to inform members about caves and caving activities in Kansas. Please share reports of your activities with fellow members. Send trip reports to Wayne White, 392 E. 197th St., Scranton, KS 66537.

KANSAS KAVER

C/O WAYNE WHITE
392 E. 197TH ST.
SCRANTON, KS 66537

KANSAS CITY 640

22 JAN 2022 PM 3 L



Britt Moore
1827 SE 20th
El Dorado KS 67042

