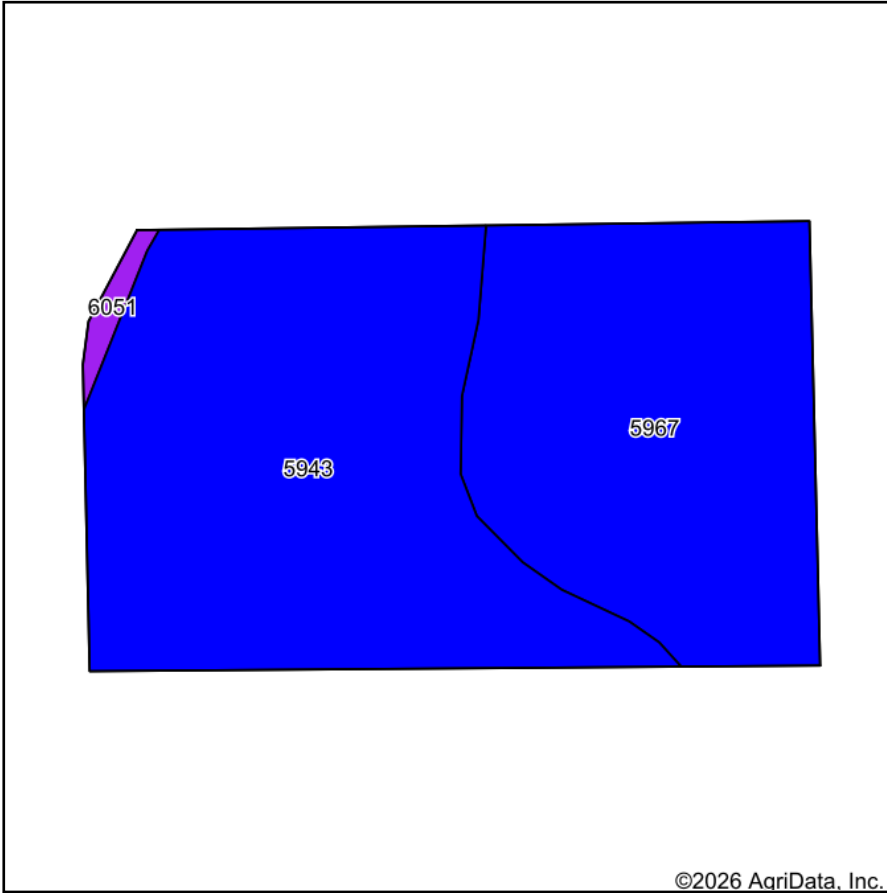
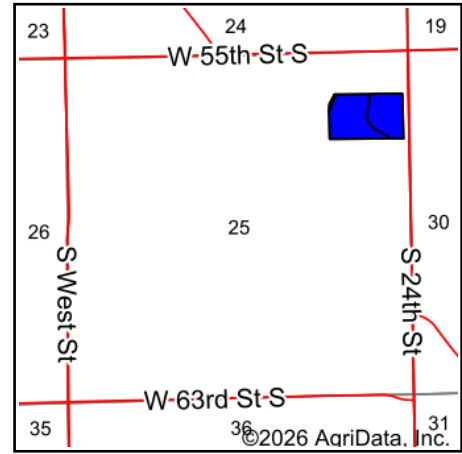


Soils Map



Soils data provided by USDA and NRCS.



State: **Kansas**
 County: **Sedgwick**
 Location: **25-28S-1W**
 Township: **Waco**
 Acres: **17.83**
 Date: **6/4/2026**



Maps Provided By:



© AgriData, Inc. 2025

www.AgriDataInc.com



Area Symbol: KS173, Soil Area Version: 21

Code	Soil Description	Acres	Percent of field	Non-Irr Class Legend	Non-Irr Class *c	Irr Class *c	Range Production (lbs/acre/yr)	*n NCCPI Overall	*n NCCPI Corn	*n NCCPI Small Grains	*n NCCPI Soybeans	*n NCCPI Cotton
5943	Saltcreek and Naron fine sandy loams, 0 to 1 percent slopes	10.01	56.1%		IIc	Iw	3040	57	44	49	57	22
5967	Tabler silty clay loam, 0 to 1 percent slopes	7.61	42.7%		IIIs	IIIs	3352	56	48	55	56	32
6051	Elandco silt loam, frequently flooded	0.21	1.2%		Vw		4838	51	46	43	51	13
Weighted Average					2.04	*-	3194.3	*n 56.5	*n 45.7	*n 51.5	*n 56.5	*n 26.2

*n: The aggregation method is "Weighted Average using all components"

*c: Using Capabilities Class Dominant Condition Aggregation Method

*- Irr Class weighted average cannot be calculated on the current soils data due to missing data.